

## ASBESTOS ANALYSIS

EMC Scientific Inc. provides top quality analytical services. We have expanded our services to include asbestos analysis. Asbestos is a naturally occurring mineral fiber. The use of asbestos in building materials was widespread until the 1980s. Asbestos can be found in many products, such as the following: drywall joint compound, plaster, floor tiles, sheet flooring, acoustic ceiling tiles, roofing materials, transite pipes and siding. Vermiculite insulation used in attics may also contain asbestos. Exposure to asbestos can pose serious health risks. Accurate identification of asbestos is imperative for ensuring the safety of workers and/or occupants of buildings where the potential for exposure exists.

## ANALYTICAL SERVICES

### Bulk Sample Analysis by Polarized Light Microscopy (PLM)

- Calibrated visual estimate
- 400 point count
- 1000 point count
- Reporting for all Canadian Provincial/Territorial regulatory thresholds

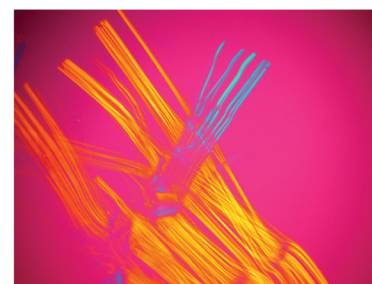
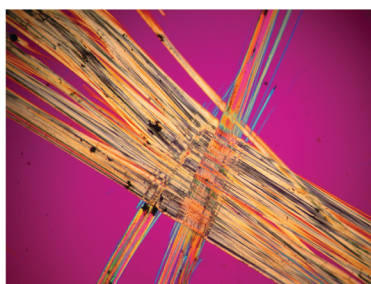
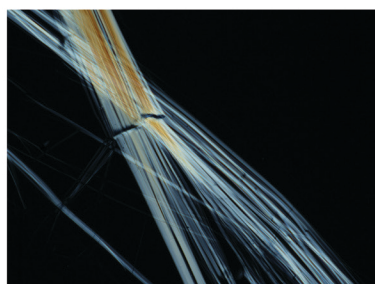
The EPA 600/R-93/116 method is generally used for analysis. Other methods such as IRSST 244-2 are available at client's request.



### Air Sample Analysis by Phase Contrast Microscopy (PCM)

- NIOSH 7400 method, "A" counting rules

### Air and Bulk Sample Analysis by Transmission Electron Microscopy (TEM)\*



## TURNAROUND TIMES

4 hours | 24 hours | 48 hours | Standard (3-5 business days)

### Other Services:

Mould | Bacterium | Dust Characterization | Lead\* | Equipment Rental/Sales | Training

\*TEM and Lead analysis subcontracted